



## TRADITIONAL PONDS | PONDS WITH A WATERFALL AND MINIMAL STREAM

Use the following tables to find the Pond Pack that best suits the size of the system being constructed. For more information about the contents of a Pond Pack refer to page 83-84.

### HOW TO USE THE TABLE:

---

- 1** Choose the width of the waterfall
- 2** Choose the water depth over the falls
- 3** Select the corresponding GPM
- 4** Once the GPM has been determined use the pond pack composition table to select the appropriate Pond Pack



## POND WATERFALL PUMPING GUIDE (IN GPM)

2

Width of Waterfall (feet)	1/4" Water Depth Over Falls (GPM)	1/2" Water Depth Over Falls (GPM)	3/4" Water Depth Over Falls (GPM)	1" Water Depth Over Falls (GPM)	1-1/4" Water Depth Over Falls (GPM)	1-1/2" Water Depth Over Falls (GPM)	2" Water Depth Over Falls (GPM)
1 ft.	4 GPM	13 GPM	24 GPM	36 GPM	51 GPM	67 GPM	103 GPM
2	9	26	47	73	102	134	206
3	13	39	71	109	152	200	308
4	18	51	94	145	203	267	411
5	23	64	118	181	254	334	514
6	27	77	142	218	305	401	617
7	32	90	165	254	356	468	720
8	36	103	189	291	406	534	823
9	41	116	213	327	457	601	925
10	45	129	236	364	508	667	1028

1

3

For help sizing larger or customized systems, call (800) 906-0604

## POND PACK COMPOSITION TABLE

POND PACKS	MAX GPM	
PP-5	80 (suggested 65)	T40F Filter Tank, CPY Component Package
PP -10	80	T75F Filter Tank, CP5 Component Package
PP-10HF	160	T75F Filter Tank, CP6 Component Package
Custom Pack	Over 160	See custom pond packs on next page

4

## WHAT'S IN A POND PACK:

Component Packages are paired with a Filter Tank to create a Pond Pack. Pond Packs provide all the Filtrific® components and connection fittings needed for a Filtrific® Pond System. Pump, liner, flex tubing, and Waterfall Starter are not included to allow for professional design flexibility.



FILTER TANK

+



COMPONENT PACKAGE

=



POND PACK

# POND-PACKS | SIZING TABLES

## COMPONENT PACKAGES *for use with Pond Packs*



### CPY COMPONENT PACKAGE

• For use with the T40F Filter Tank

GPM: 80 (Suggested 65)

INCLUDES:

- 1 - 10 Mesh Filter Basket, E10-40
- 1 - Door Skimmer, S44D
- 1 - Pump Discharge Kit, D01  
(2" discharge for 1", 1-1/4", & 1-1/2" pump threads)
- 1 - Overflow Kit, F23-Q  
(includes 2" x 2-1/2' pipe)
- 1 - Intake Pipe, 4" x 2-1/2'

MODEL: CPY



### CP5 COMPONENT PACKAGE

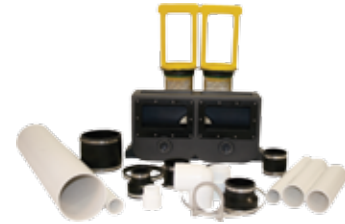
• For use with the T75F Filter Tank

GPM: 80

INCLUDES:

- 2 - 10 Mesh Filter Baskets, E10-75
- 1 - Door Skimmer, S64D
- 1 - Pump Discharge Kit, D21-Q  
(2" discharge for 1", 1-1/4", 1-1/2" & 2" pump threads)
- 1 - Overflow Kit, F23-Q  
(includes 2" x 2-1/2' pipe)
- 1 - Intake Pipe, 4" x 2-1/2'

MODEL: CP5



### CP6 COMPONENT PACKAGE

• For use with the T75F Filter Tank

GPM: 160

INCLUDES:

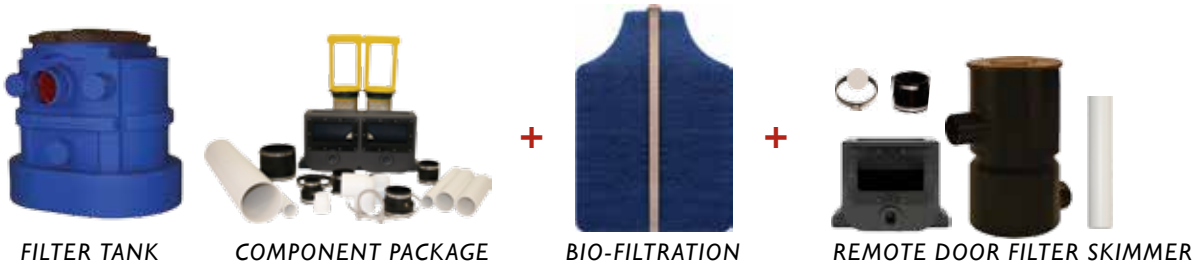
- 2 - 10 Mesh Filter Baskets, E10-75
- 1 - Door Skimmer, S66D
- 1 - Pump Discharge Kit, D24-Q  
(3" discharge for 2" and 3" pump threads)
- 1 - Overflow Kit, F23-Q  
(includes 2" x 2-1/2" pipe)
- 1 - Intake Pipe, 6" x 2-1/2'

MODEL: CP6

## FOR CUSTOM POND PACKS:

For Traditional Pond applications flowing over 160GPM, the intake capacity of the Filter Tank can be increased using Remote Filter Skimmers (80GPM per unit) see page 34.

Add bio-filtration for fish as needed. See pages 44-45



In very large Traditional Pond applications, two S66D Door Skimmers or S66 Fixed Skimmers can connect to the 10" intake port on the T390F Filter Tank.



Large Door Skimmer

GPM: 160  
MODEL: S66D

Dual Skimmer Fitting

GPM WHEN USED WITH FIXED SKIMMERS: 400  
GPM WHEN USED WITH DOOR SKIMMERS: 320  
MODEL: Y1066